

PulseForge Inc.

Instructions Number	291-0459-01
Revision	Null
Effectivity Start-End	
Latest ECO Number	

Assembly Instructions

Assembly Instructions Process Chamber Kit

BOM Number: D183-00-05-RevA

Tools and Supplies Required

- Latex gloves, flush-cut wire cutter, 1/16 Allen key

Referenced Documents and Procedures

- None

Assembly Steps

Note: Wear gloves during assembly.

- Place PD183-08, O-Ring, into the groove in D183-16-RevA, chamber base.



PulseForge Inc.

Instructions Number	291-0459-01
Revision	Null
Effectivity Start-End	
Latest ECO Number	

Assembly Instructions

- Drop D183-19, sample spacer, into the chamber base.



- Place the quartz disc, PD183-07, on top of the chamber base.



PulseForge Inc.

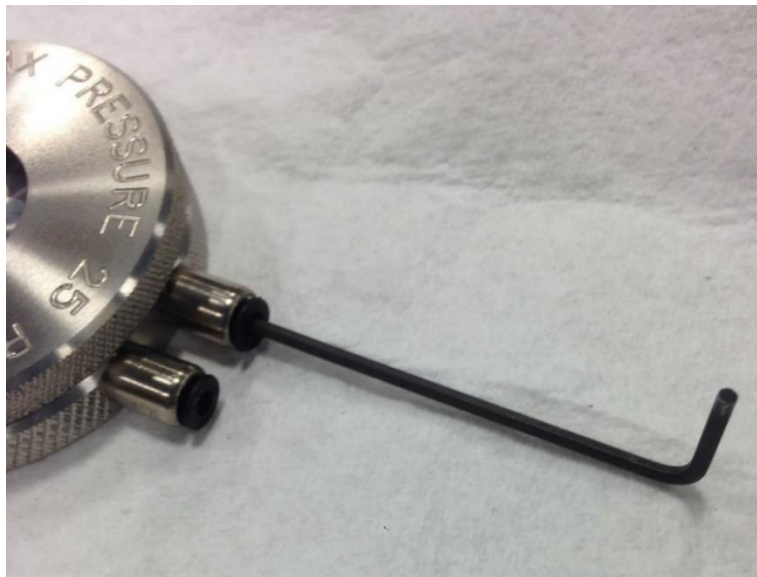
Instructions Number	291-0459-01
Revision	Null
Effectivity Start-End	
Latest ECO Number	

Assembly Instructions

- Screw D183-17-RevA, chamber cap, onto the chamber base. Do not over tighten.



- Thread PD183-09, tube adapter fittings, into the chamber base. Tighten with a 1/16 Allen key inserted into the fitting.

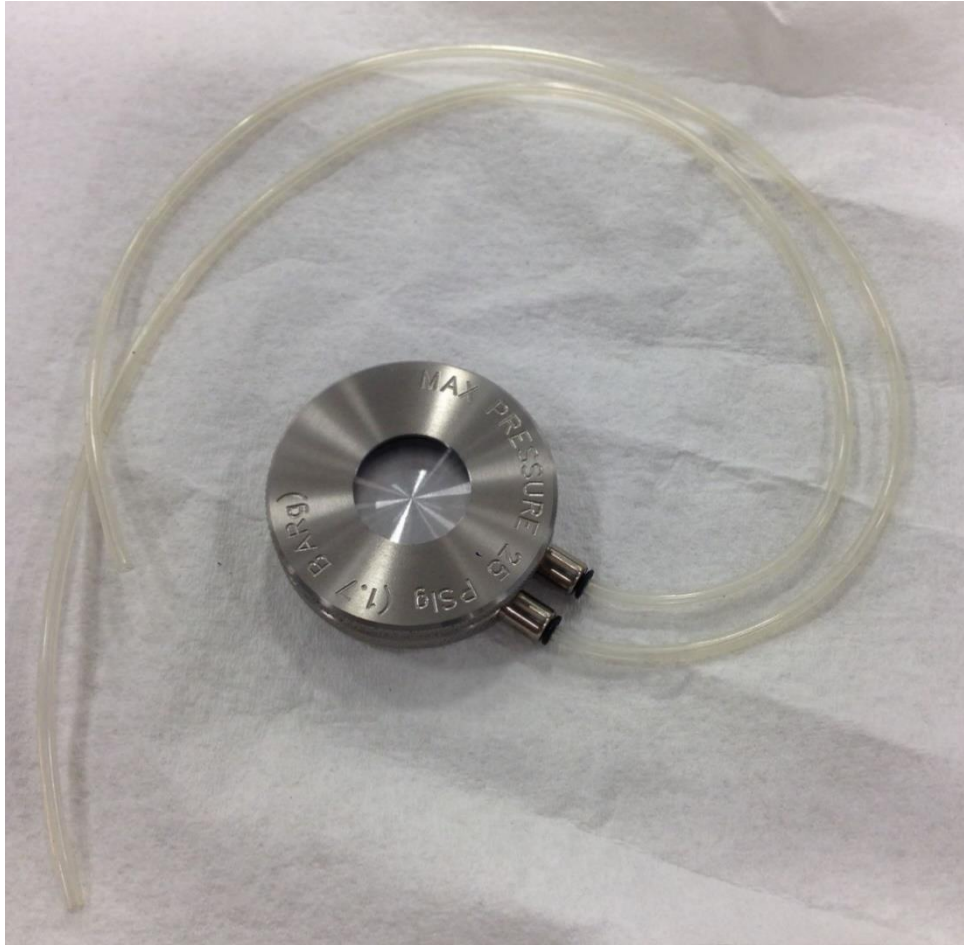


PulseForge Inc.

Instructions Number	291-0459-01
Revision	Null
Effectivity Start-End	
Latest ECO Number	

Assembly Instructions

- Insert D183-20, silicone rubber tubing, into each fitting. Length of each hose is approximately 18 inches.

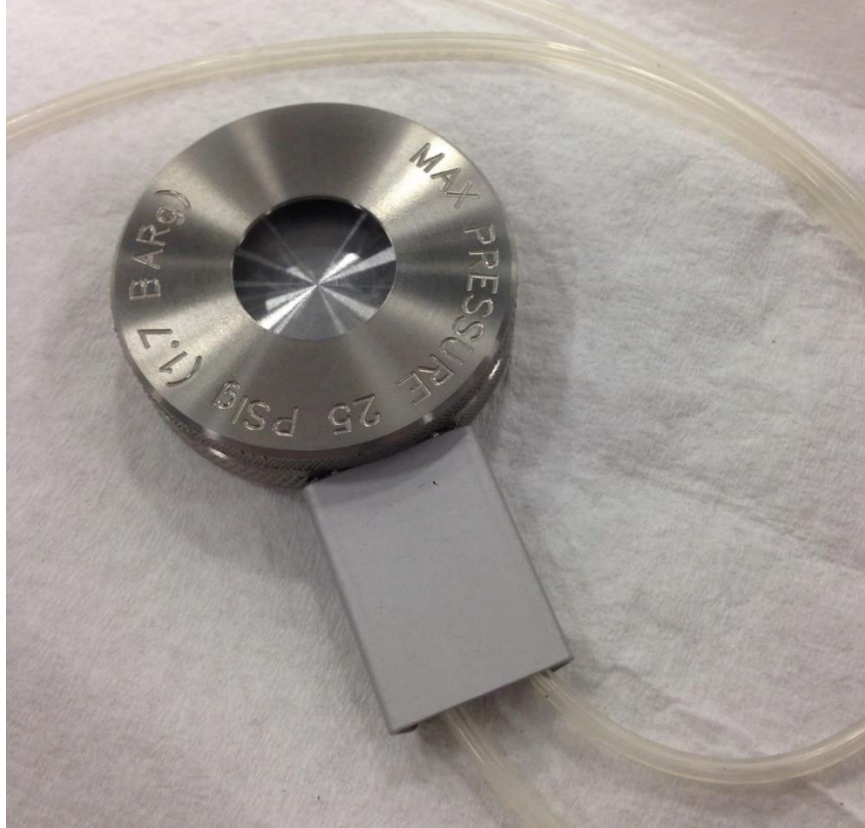


PulseForge Inc.

Instructions Number	291-0459-01
Revision	Null
Effectivity Start-End	
Latest ECO Number	

Assembly Instructions

- Place D183-18, light shield, over the fittings and tubing.



- Place two PD183-15, tube fitting plugs, and two PD183-13, pinch clamps, into a clear plastic bag and label.



PulseForge Inc.

Instructions Number	291-0459-01
Revision	Null
Effectivity Start-End	
Latest ECO Number	

Assembly Instructions

- Place the completed assembly into 950-0001-00, cardboard box.

